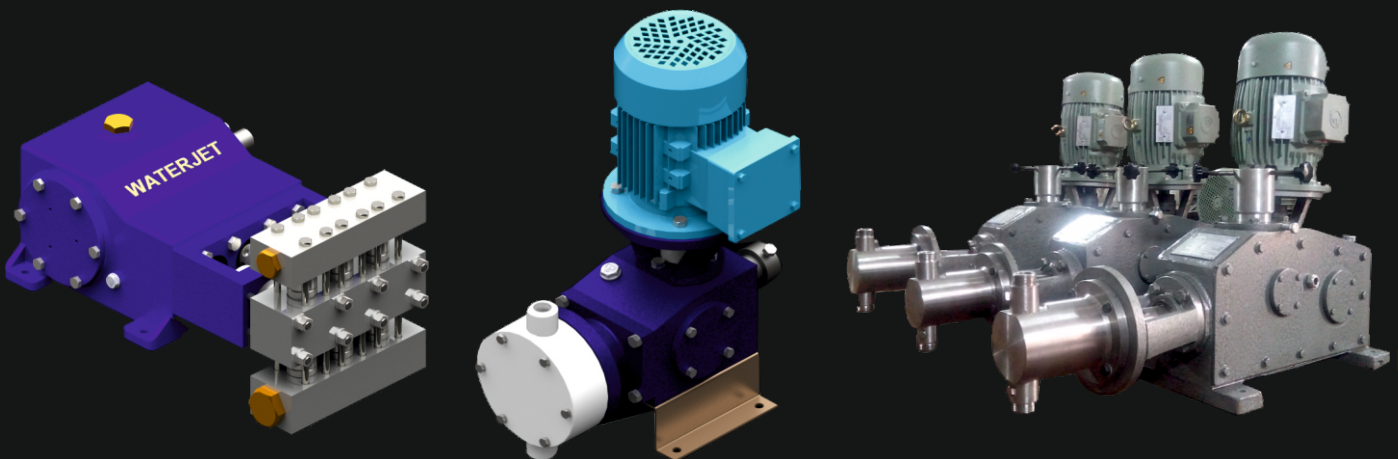




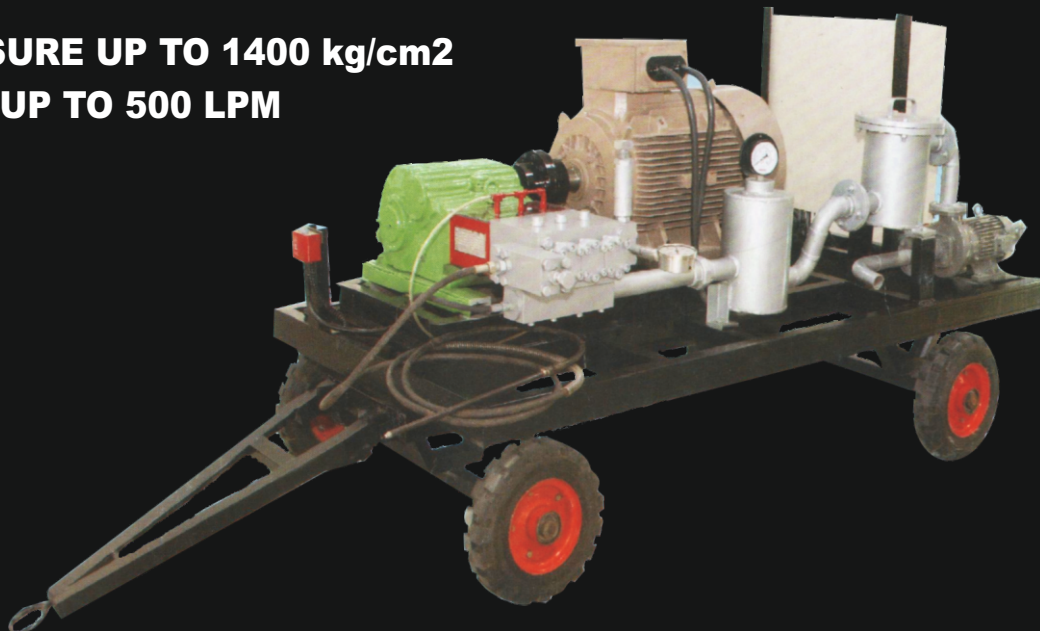
Industrial Pressure Solution

WATERJET

Pumps & System



- **PRESSURE UP TO 1400 kg/cm²**
FLOW UP TO 500 LPM



I
N
D
U
S
T
R
I
A
L

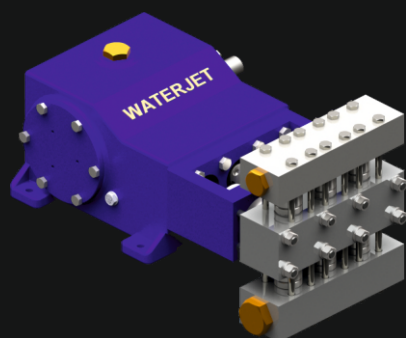
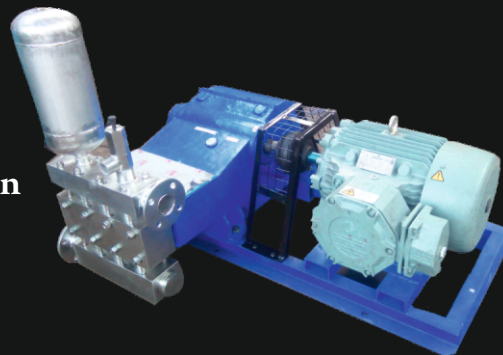
P
R
E
S
S
U
R
E

S
O
L
U
T
I
O
N



Industrial Pressure Solution

Waterjet Pumps and Systems is a Widely held Indian Manufacture of High Pressure Triplex Plunger Pump, Provides unmatched combination of application expertise and positive displacement pumping products to meet pumping needs of its customer.



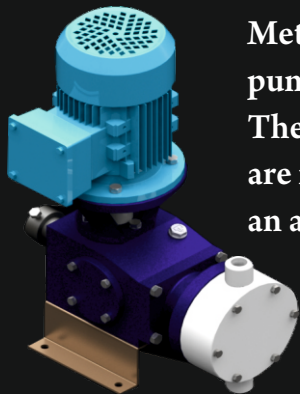
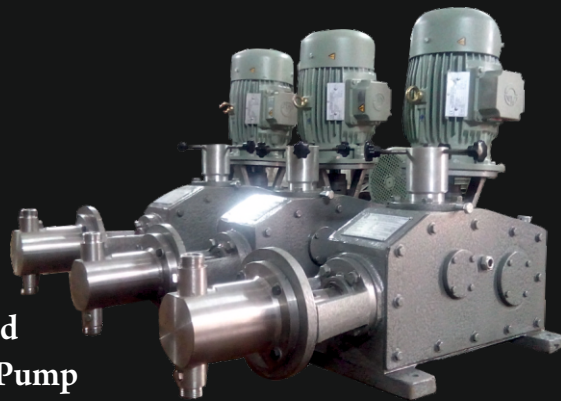
We Offer one of the Industry's Broadest Selection of Pumping Technologies and Product design. We are dedicate to assist our Customer to achieve the best Performance of their Systems, Our Products range Including pump having Pressure up to 1500 Kg./Cm2 and Flow up to 300 m3 / hr., We are Well known for our ability to Manufacture built - to - Order custome pumps for specific application.

Sr. No	Pump Model	Capacity In LPH	Plunger Dai Ø	SPM
1	WJ - 10	0 - 300	19 MM	350
2	WJ - 20	0 - 700	28 MM	250
3	WJ - 25	700 - 1200	32 MM	200
4	WJ - 35	1200 - 1800	42 MM	200
5	WJ - 45	1800 - 3600	52 MM	200
6	WJ - 50	4000 - 7000	58 MM	200
7	WJ - 55	6000 - 8500	72 MM	200
8	WJ - 65	8000 - 12000	78 MM	200
9	WJ - 70	12000 - 14000	86 MM	200
10	WJ - 75	15000 - 16000	92 MM	200
11	WJ - 80	16000 - 19000	98 MM	200
12	WJ - 100	25000 - 30000	96 MM	200
13	WJ - 150	30000 - 40000	104 MM	200
14	WJ - 180	40000 - 52000	112 MM	200
15	WJ - 200	50000 - 60000	110 MM	200
16	WJ - 250	60000 - 70000	112 MM	200
17	WJ - 300	70000 - 80000	102 MM	200
18	WJ - 310	80000 - 90000	116 MM	200
19	WJ - 350	90000 - 100000	108 MM	200
20	WJ - 355	100000 - 130000	122 MM	200



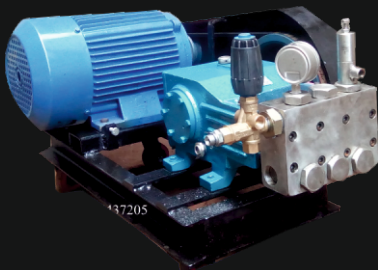
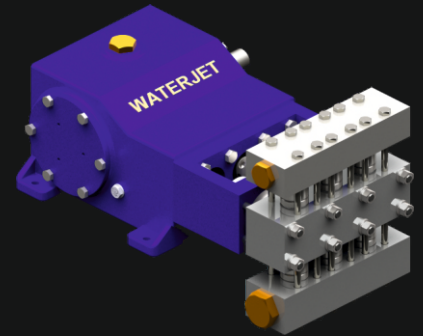
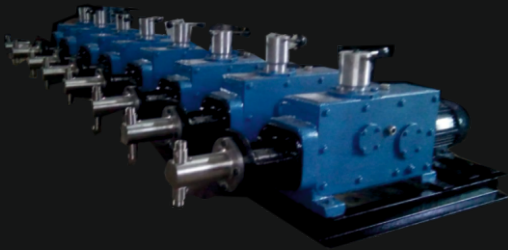
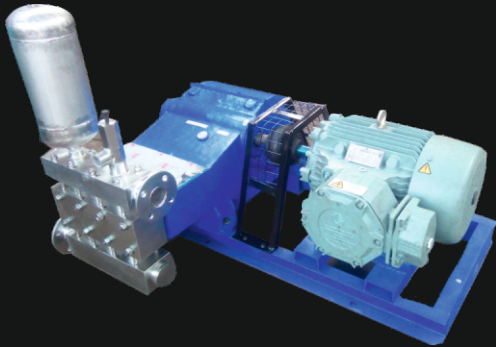
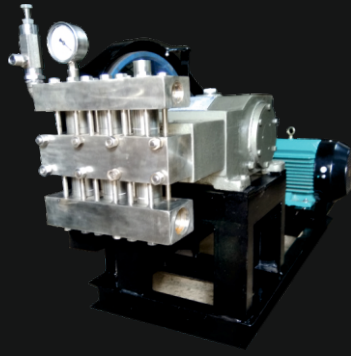
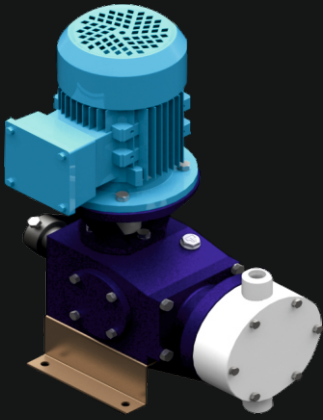
Industrial Pressure Solution

Indian Chemicals Industries Have Made Good Progress In Last 4 Years Decades. And They Poised For Further Growth With Advanced Technologies. In Order To Have Good And Contiguous Quality Product Output There Is Need For Chemical Dosing System. We Provide Chemical Dosing Pump In All Type Of Chemicals Industries.



Metering Dosing pumps can be considered a substitute to positive displacement pumps. Both pumps discharge a known volume with every revolution or cycle. The discharge volume is largely independent of back pressure. Metering pumps are much more accurate then positive displacement pumps. Metering pumps have an average accuracy of ± 1.0 percent.

Sr. No	Pump Model	Capacity In LPH
1	WM - 10	0 - 50
2	WM - 15	0 - 100
3	WM - 20	0 - 150
4	WM - 25	0 - 200
5	WM - 30	0 - 300
6	WM - 40	0 - 500
7	WM - 50	0 - 1000
8	WM - 60	0 - 1500
9	WM - 70	0 - 2000
10	WM - 80	0 - 3000
11	WM - 90	0 - 4000
12	WM - 100	0 - 5000
13	WM - 110	0 - 6000
14	WM - 120	0 - 7000
15	WM - 130	0 - 8000



INDUSTRIAL PRESSURE SOLUTION

WATERJET
PUMPS & SYSTEMS

Off :

10/1-B, Mahalaxmi Industrial Estate, Nr.Paurvi Gas Godown, Opp. New Vasahat,
Bombay Conductor, Ghodasar Crossing Road, Vatva G.I.D.C., Ahmedabad-382445.

M.: 8905437205, 9714227735

E-mail : info@waterjetpumps.in, waghbharata@gmail.com,

sales@waterjetpumps.in, waterjetpumps@gmail.com

Web : www.waterjetpumps.in